



How to read your invoice

1 Invoice Details:

Key identification details for your account.

Account number: Identifies your business as a customer of Jacana Energy. Quote this number when contacting us.

2 Important numbers:

Enquiries: Connects you directly to your local business account management team.

Network Faults & Outages: Connects you to the network provider so you can report or get information about faults and power interruptions.

Life Threatening Emergencies: Call to report any life threatening situation related to your power supply.

3 Service Address: The address where the meters are located.

4 Account Summary: An overview of your last bill, new charges for the current billing period and the total amount due.

Previous bill: Shows the date issued, the balance brought forward, payments received by the date of this invoice and your total due.

Current bill: Billing period: Shows the billing period you are being charged for and a summary of all charges.

Total due: Shows the total amount due for the billing period after adjustments, including any amount owing since your last bill, plus GST.

To view this online, please go to: www.jacanaenergy.com.au/businessbill

5 Total Due and Due Date: Shows how much you need to pay and by when.

6 Daily usage – retail charges: Shows the daily amount of electricity (in peak and off-peak times) you used during the billing period.

7 Daily network demand: Shows the daily amount of energy needed by the network (in peak and off-peak times) to transmit electricity to your site.

8 Monthly usage compared to same time last year: Compares your last three months' consumption with your usage at the same time last year, so you can compare your usage by season.

9 Average daily 15 minute usage: Shows your average daily 15 minute interval consumption across the billing period, so you can look at ways to reduce your daily consumption.

10 Useful Data: **Average daily usage and average daily cost:** These are calculated as an average of this bill.

Greenhouse gas emissions this bill: Shows your greenhouse gas emissions for this billing period in tonnes of CO₂-e.

11 Important notice: Important messages from Jacana Energy will be located here.



1 Invoice Details

Account number 103456789	Tax invoice 123456	Issue date 7 Feb 2018
Your ABN 12345678999	Jacana Energy ABN 65 889 840 667	



Business Sample Name
Sample Group Inc
Attention: John Smith
210 Sample Street
Darwin NT 0800

- 2 Enquiries**
08 8985 7298 (Mon–Fri, 8am–4:30pm)
- Network Faults & Outages**
1800 245 092 (24hrs – Power & Water Corp)
- Life Threatening Emergencies**
000 or 1800 245 090 (24hrs/7days)
- businesscustomers@jacanaenergy.com.au**
jacanaenergy.com.au
Jacana Energy, GPO Box 2601, Darwin NT 0801

Electricity Tax Invoice

3 Service Address: Lot 123, 210 Sample Street, Darwin NT 0800

4 Account Summary

Previous bill: Issued 5 January 2018

Opening balance	\$56,576.59
Payments received	\$56,576.59 CR

Current bill: Billing period 1 January - 31 January 2018

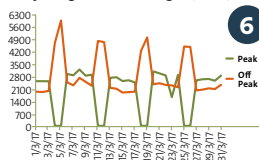
Balance brought forward (payable now)	\$0.00
*New charges	\$13,735.05
Total charges (ex GST)	\$13,735.05
GST (on new charges and adjustments)	\$1,373.51
Total due (inc GST)	\$15,108.56

5 Total Due \$15,108.56

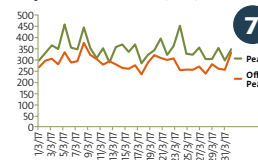
Due Date 21 Feb 2018

Usage Profiles

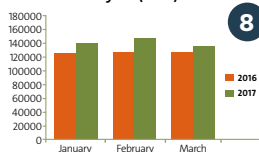
Daily usage – retail charges (kWh)



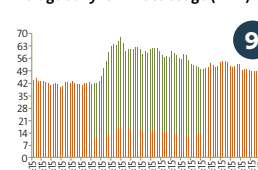
Daily network demand (kVA)



Monthly usage compared to same time last year (kWh)



Average daily 15 minute usage (kWh)



Useful Data

- Average daily usage**
1,621.14kWh
- Average daily cost**
\$487.37
- Greenhouse gas emissions this bill**
27,811 kg CO₂-e

Welcome to your new Jacana Energy invoice. You now have access to a detailed breakdown of usage, transactions and amounts due. Visit jacanaenergy.com.au/businessbill for information on how to read your new invoice.

*Indicates a GST applicable charge. Please refer to all pages of this invoice.

12

Service details

Account number 103456789	Billing period 1 January – 31 January 2018	Power factor (Max) Peak 0.94 Off Peak 0.92	Summary of meter (s) 226315/1 50,255.404 kWh
Service address Lot 123, 210 Sample Street Darwin NT 0800	Total usage (kWh) 50,255.404 kWh		

13

Payments received since your last invoice

Previous bill: Issued 5 January 2018	
Previous account	\$56,576.59
Payments received	\$56,576.59 CR
Balance brought forward	\$0.00

Details of your electricity charges

	Usage	Unit price	Total cost (ex GST)
Non-regulated retail charges (peak applies 6am – 6pm Monday – Friday)			
*Non Regulated Peak Energy (kWh)	20,115.280	\$0.1945290	\$3,913.01
*Non Regulated Off Peak Energy (kWh)	30,140.124	\$0.1555560	\$4,688.48
Regulated network charges (peak applies 6am – 6pm everyday)			
*System Control Charge	50,255.404	\$0.0010000	\$50.26
*System Availability Charge (meter/day)	31 days	\$23.0661290	\$715.05
*Low Voltage Network Peak Energy (kWh)	27,165.612		\$1,347.53
	First 10,000	\$0.0550700	\$550.70
	Next 20,000	\$0.0464200	\$796.83
*Low Voltage Network Off Peak Energy (kWh)	23,089.792		\$1,016.11
	First 10,000	\$0.0548100	\$548.10
	Next 20,000	\$0.0399400	\$822.81
*Low Voltage Peak Demand (kVA)	111.281		\$918.96
	First 50	\$8.2580000	\$412.90
	Next 100	\$8.2580000	\$506.06
*Low Voltage Off Peak Demand (kVA)	116.527		\$226.99
	First 50	\$1.9480000	\$97.40
	Next 100	\$1.9480000	\$129.59
Environmental charges			
*Large Scale Renewable Energy	50,255.404	\$0.0141420	\$710.71
*Small Scale Renewable Energy	50,255.404	\$0.0029440	\$147.95
Total (ex GST)			\$13,735.05
GST (on new charges)			\$1,373.51
Total new charges (inc GST) for Lot 123, 210 Sample Street, Darwin NT 0800			\$15,108.56

*Indicates a GST applicable charge. Please refer to all pages of this invoice.
 †Includes loss factor.

16

17

Payment Options



Electronic Funds Transfer (EFT)
 Account name: Jacana Energy, BSB: 085461
 Account number: 421000001, Ref: 103456789
 Email your payment advice to
 remittance@jacanaenergy.com.au



Post Billpay
 In Person
 At any Australia
 Post outlet

Account number 103456789



Direct Debit
 To set one up today visit
 jacanaenergy.com.au/directdebit



Billor Code: 264465
Ref: 01034567891

Due date 21 Feb 2018



Cheque
 Mail this slip with your cheque payable to
 Jacana Energy C&I, GPO Box 2601, Darwin NT 0801

Total amount \$15,018.56



2255 0103456789

12 Service details:

Power factor*: Is a measure of how efficiently power drawn from the network (kVA) is converted into useful energy (kW) by your electrical installation. The higher the power factor, the more efficient your site is at utilising supplied power, with 1% being the most efficient.

Loss factor*: Represents the energy loss due to electrical resistance and heating when electricity travels through the network.

Summary of meter(s): Total usage of each meter(s) over the billing period.

13 Payments received since your last invoice:

Shows details of payments and transactions.

14 Non-regulated retail charges:

Shows the total amount of electricity you used in peak and off-peak times during the billing period at your applicable rates.

15 Regulated network charges:

These are costs the network provider charges for the management and delivery of electricity through their network to your premises. Jacana Energy passes these costs on to you directly without any mark-up.

16 Environmental charges:

These are the Large-scale and Small-scale renewable energy charges that relate to the Federal Government's Renewable Energy Target scheme.

17 Payment options:

Five convenient ways to pay your invoice including unlimited EFT payments.

* Information about power factor and loss factor is available at:
jacanaenergy.com.au/powerfactor